



WOODLAND CREE
EDUCATION AUTHORITY

Teach. Belong. Make an Impact.

Join a learning community rooted in
culture, relationship, and student success.

*Discover opportunities with
Woodland Cree Education Authority.*

◆ **OPEN TO EXPLORE** ◆

OUR CULTURE ◆ OUR STUDENTS ◆ OUR FUTURE

Teach. Belong. Make an Impact.

Woodland Cree First Nation

Treaty-Based Education Strong Community Brighter Futures

Welcome to Woodland Cree First Nation, a place where education is rooted in relationship – with students, families, Elders, culture, language, land, and community.

At Cadotte Lake School, teaching is more than delivering lessons. It is about helping students feel supported, connected, capable, and proud of who they are. Our school is growing with a clear vision: to build strong learning experiences that honour Woodland Cree identity, support academic success, and prepare students for the future.

We are looking for educators who want to be part of something meaningful. Teachers who value literacy, numeracy, teamwork, culture, athletics, creativity, and community. Teachers who are ready to work hard, build trust, and help shape a strong future for our students.



You are not just coming here to teach.
**You are coming here to belong,
contribute, and grow with us.**





Dear Future Teacher,

Welcome to our community. You belong here. At Woodland Cree First Nation (WCFN), we are proud to be exploring and advancing Treaty-based Education in partnership with our Elders, parents, teachers, students and partners. We believe that the key to a healthy future is the protection of a strong education experience for our children, youth and families.

We are proud that our school day reflects a comprehensive school health approach to protect the success and well-being of both staff and students. Comprehensive School Health supports the healthy development of the whole person through its focus on the four pillars of teaching and learning, social and physical environment, partnerships and services and policies. (Joint Consortium for School Health, 2024)

When you join our team, please be prepared to work and play hard! Our students love to play sports and be actively involved in the opportunities offered by our nation and the region. In addition to sports and recreation, our school is actively seeking dynamic teaching professionals who value strong literacy and numeracy practices and who are willing to mentor one another. We are in pursuit of a deep, strong and collaborative teaching team.

WCFN has strong, vibrant and passionate Elders who play a strong role in national politics and the protection of Indigenous identity and languages.

We are looking forward to welcoming you, your family and the love of lifelong learning to our school's community.



“Teachings come from everywhere when you open yourself to them. That’s the trick of it really, to open yourself to everything and everything opens itself to you.”

— Richard Wagameese, Anishinaabe (Ojibwe) novelist, journalist, mentor

Sincerely

Felicia Ochs

Education Director
Woodland Cree First Nation



CADOTTE LAKE
SCHOOL

HOPE IS ON THE HORIZON

STRONG ROOTS. BRIGHT FUTURES.



THE LAND

01.

WOODLAND CREE FIRST NATION

Woodland Cree First Nation is home to four reserves in northern Alberta: Cadotte Lake, Simon Lake, Golden Lake, and Marten Lake. Just 85 km from Peace River and 500 km northwest of Edmonton, our Nation's land spans over 161,000 hectares – the first in Alberta under our own Land Code.

Here, you'll find endless outdoor adventure. Moose, deer, bear, bison, and beaver roam freely. Lakes and rivers invite fishing, canoeing, and relaxation. Forests provide medicine, food, and teaching. This is a place where land sustains life – and life honours the land. Our community is proud of its history, resilience, and leadership. Woodland Cree First Nation signed Adhesion to Treaty 8 in 1991, and in recent years has continued moving toward a stronger Treaty-Based Education model that reflects local priorities, identity, and self-determination.



“

**THIS IS A PLACE
WHERE EDUCATION,
LAND, LANGUAGE,
AND COMMUNITY
ARE DEEPLY
CONNECTED.**

”



02. | WAY OF LIFE TEACHING: LEARNING BEYOND THE CLASSROOM

At Woodland Cree First Nation, education is not confined to four walls. Our students and staff participate in Way of Life Teaching, where the land, culture, and traditions become part of the daily curriculum.

Through hands-on experiences, teachers and students alike learn skills that have been passed down for generations. These may include:



FISHING AND HUNTING CAMPS

Gaining respect for the land while learning traditional harvesting practices.



HORSEMANSHIP AND CANOEING

Building confidence and teamwork while connecting with the natural environment.



CRAFTS AND REGALIA MAKING

From beadwork to ribbon skirts, students experience the artistry and patience of cultural creation.



SEASONAL WAY OF LIFE LEARNING

Medicine picking, storytelling around the fire, or snowshoeing in winter.



WAY OF LIFE TEACHING:

LEARNING BEYOND THE CLASSROOM

As an educator, you will not just witness these moments—you'll be invited to participate. Elders and knowledge keepers share teachings that encourage balance, respect, and harmony. This holistic approach ensures that students grow not only academically, but also spiritually, emotionally, and culturally.

For teachers, this is a chance to immerse yourself in Indigenous ways of knowing—to gain wisdom, perspective, and a deeper understanding of the community you are serving. It's learning that stays with you for life.





LEARNING THROUGH CULTURE, ELDERS, AND COMMUNITY

At Woodland Cree First Nation, education is strengthened by the knowledge of our Elders, families, and community members.

Our Elders play an important role in supporting students, sharing teachings, encouraging language learning, and helping young people understand who they are and where they come from. Their presence in the school brings warmth, guidance, and a deeper sense of belonging.



We honour our role as keepers of the land. We honour the wisdom and knowledge of our ancestors. Our language and culture connect us to the land, to each other, and to future generations.



Students have opportunities to learn through Way of Life Teaching, cultural activities, seasonal experiences, community events, and hands-on learning. These experiences may include language learning, hunting and trapping teachings, outdoor education, traditional skills, sewing, beading, drumming, sports, canoeing, and community gatherings.



Community life is active and welcoming. Events may include Treaty Days, netting camps, hunting camps, hockey nights, family dances, Treaty 8 Games, ribbon skirt and regalia making, seasonal celebrations, and National Indigenous Peoples Day.



For teachers, this means learning alongside the community – not from the outside looking in.



CADOTTE LAKE SCHOOL .04

Cadotte Lake School serves students from Kindergarten to Grade 12 in a community-centered learning environment. We are proud to offer daily breakfast and lunch programs, access to surrounding forests, a full-size gymnasium, high-speed Wi-Fi, classroom learning spaces, and career and technology supports.

Our school is proud to be band-operated with the support of Woodland Cree First Nation. We are working with partners to strengthen Treaty-Based Education and build learning experiences that reflect the needs, goals, and identity of our students.

WHAT WE OFFER

K-12 Education

Student-centered learning in a supportive school environment.

Breakfast and Lunch Programs

Students and staff are supported throughout the day.

Sports and Physical Activity

Students love to play, compete, move, and be involved.

Culture and Language

Cree language, Elder involvement, and Way of Life Teaching are part of the school experience.

Clubs and Activities

Students may take part in volleyball, hockey, basketball, track and field, swimming, canoeing, Indigenous Games, traditional dance, music, choir, cooking, ceramics, pottery, anime club, Dungeons and Dragons, travel club, and more.

Outdoor Learning

With forests and land nearby, learning is not limited to the classroom. This is a school with energy, heart, and room to grow.

A DAY IN THE LIFE WHAT TEACHING HERE LOOKS LIKE .05

Teaching at Cadotte Lake School is active, relational, and community-focused.

The school day begins with time for teachers to prepare before students arrive. Students start their day with breakfast, routines, and opportunities to feel welcomed and supported.

Teachers may work in team-teaching settings and support mixed-grade classrooms of approximately 15–20 students.

Kindergarten is a Cree language nest and is taught as Cree Immersion for a full day. Students have recess and access to the school playground and field, with staff supporting supervision and student engagement throughout the day.

Teachers are provided planning and release time whenever possible. The regular teaching day runs until 4:00 PM, and there are opportunities for extracurricular coaching, with coaches remunerated for these roles.

We encourage teachers to become part of the broader school community. Evening events are posted in advance and, while not mandatory, they are a meaningful way to build relationships and understand the community more deeply. Staff are also invited to take Cree language classes with Elders if they are interested in learning the community language.

On specific Fridays, students may participate in physical education and/or Way of Life Teaching experiences with neighbouring partners, regional coaches, and community Elders.

THIS IS A PLACE FOR TEACHERS WHO WANT TO BE INVOLVED, SUPPORTED, CHALLENGED, AND CONNECTED.



04. HOUSING

A PRACTICAL PLACE TO SETTLE IN

We know that feeling at home matters. Woodland Cree First Nation offers teacherage housing that helps staff settle in comfortably and focus on the work that matters most – supporting students and becoming part of the community.

Our teacherages are designed to provide a practical, welcoming living space for educators who are joining the team. The goal is simple: to make your transition smoother and help you feel supported from the moment you arrive.

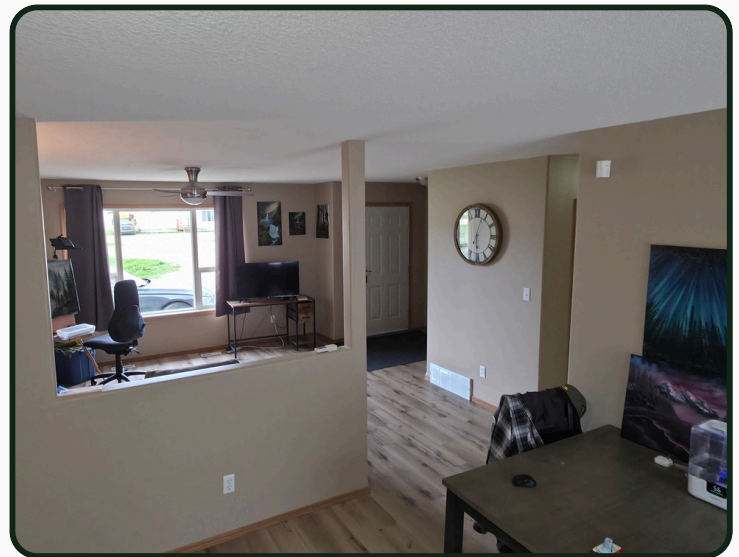
Each unit is intended to offer the essentials teachers need for day-to-day living, with convenient access to the school and community services. This gives staff a strong starting point as they build relationships, find their rhythm, and become part of Cadotte Lake School and Woodland Cree First Nation.

- Furnished living spaces
- Kitchen appliances and equipment
- In House Laundry access
- Drinkable water
- High-speed Wi-Fi
- Walking distance to the school, health centre, and band office

Teacherage housing is one more way we work to support staff well-being, connection, and long-term success in the community.



Teacherage Exterior



**A
comfortable
place to live
helps create
a stronger
place to
teach.**



Join Our Team

COME TEACH WITH US. COME GROW WITH US.
COME BE PART OF WOODLAND CREE FIRST NATION.

Cadotte Lake School is looking for educators who want to make a real difference — teachers who care about students, value community, respect culture, and are ready to help build something strong.

If you are looking for a place where your work matters, where relationships come first, and where education is connected to land, language, identity, and community, we would be proud to welcome you.



Learn more:
www.wcfnea.ca

Apply / Contact:
hr@cadottelakeschool.ca

*Make an impact
where it matters most.*